

Type III Barricades...

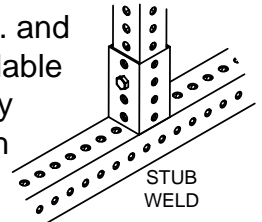
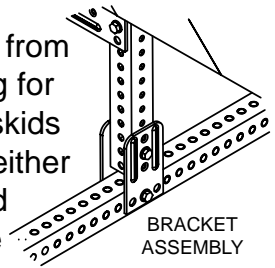
WBT3 Series Barricades
NCHRP 350 APPROVED
FHWA Letter WZ-100

Barricade Model Numbers

- WBT3SW - Stub Receivers**
- WBT3SWH - Stub Receivers and Horizontal Crossbar**
- WBT3BR - Connector Brackets**
- WBT3BRH - Connector Brackets and Horizontal Crossbar**

Barricade Basics...

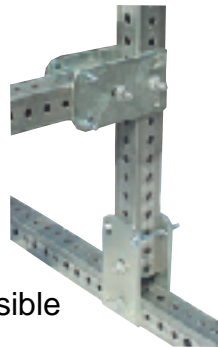
Our Type III Barricades are made from versatile galvanized square tubing for both the skids and uprights. The skids are connected to the uprights by either a bracket assembly or a stub weld receiver. The panels are available 8" wide in hollow core plastic or up to 12" wide in 2MM ALPOLIC® 350 in lengths of 4-ft., 6-ft., 8-ft., 10-ft. and 12-ft. Reflective sheeting is available in 3M engineer grade hi-intensity or diamond grade on one or both sides. The pattern can be right slant, left slant or chevron.



WBT3BRH

Bracket Assembly Barricade

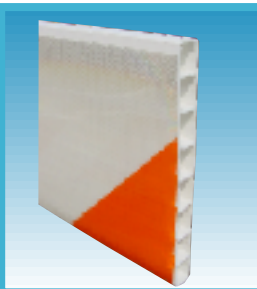
- Typical 5 ft. barricade with 3 - 8 ft. chevron pattern panels
- Break away system will yield upon impact with connector or stub weld brackets
- Easy to assemble & collapsible for storage



WBT3SWH

Stub Weld Barricade

- 5 ft. barricade with 3 - 8 ft. chevron pattern panels. ALPOLIC® 350 sign mounted to top panel
- Both stub weld and bracket unit can be broken down quickly for easy transport
- Economical yet durable



Lightweight, Durable & Strong 1" Thick Hollow Plastic Core for Rails

NOTE: Single 2MM ALPOLIC® 350 sign up to 33 square feet or any combination of signs up to 33 square feet of sign mounted to single or multiple rails. Twelve inches minimum from ground to bottom of sign per WZ-100 acceptance letter. ALPOLIC® 350 is protected by the following: U.S. Patent No. 6,569,510,B1. Violation of these rights is subject to liability for infringement to the full extent of the law.