



# BRACKETS

All brackets come with 5/16" set screws...vandal proof hardware & bolt thru applications are available

## STYLE #606

for flat blades, 3-1/4" blade holder



**Round Cap**  
for 2-3/8" post  
ksi#H606F2



**90 Degree Crosspiece**  
ksi#H606F90  
(45 degree also available  
ksi#H606F45)

### U-Channel Cap w/bolts

ksi#H606FU90 cap sits at 90 degrees to flange on post (pictured)  
ksi#H606FU180 cap sits at 180 degrees to flange on post



## STYLE #707

for extruded blades, 3-1/4" blade holder



**Round Cap**  
for 2-3/8" post  
ksi#H707EX2



**90 Degree Crosspiece**  
ksi#H707EX90  
(45 degree also available #ksiH707EX45)

### U-Channel Cap w/bolts

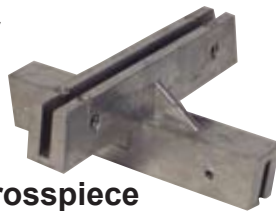
ksi#H707FEXU90 cap sits 90 degrees to flange on post  
ksi#H707EXU180 cap sits 180 degrees to flange on post

## STYLE #808

for flat or extruded blades, 5-1/4" blade holder



**Round Cap**  
ksi#H808F2 cap for 2-3/8" O.D. round post  
ksi#H808EX2 cap for extruded blade



**90 Degree Crosspiece**  
ksi#H808F90 for flat blade  
ksi#H808EX90 for extruded blade

### U-Channel Cap w/bolts

**For Flat Blades...**  
ksi#H808FU90 cap sits 90 degrees to flange on post  
ksi#H808FU180 cap sits 180 degrees to flange on post  
**For Extruded Blades...**  
ksi#H808EXU90 cap sits 90 degrees to flange on post  
ksi#H808EXU180 cap sits 180 degrees to flange on post (pictured)



## STYLE #808 LOCKE

Slide in slot for extruded blades, 5" blade holder



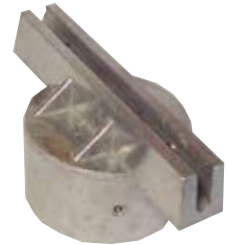
ksi#H808EXL2 cap for 2-3/8" O.D. round post  
ksi#H808EX90 90 Degree Crosspiece

**Round Cap**

## STYLE #809

for flat or extruded blades, 6" blade holder

for superior sign holding strength - U-Channel cap and 90 degree crosspiece also available



**Round Cap**

## STYLE #812

for flat or extruded blades, 12" blade holder



**Round Cap** for 2-3/8" post

ksi#H812F2 for flat blade  
ksi#H812EX2 for extruded blade

**Round Cap**

**Square Cap** for 2"x2" post  
ksi#H812F2SQ for flat blade

**90 Degree Crosspiece**

ksi#H812F90 for flat blade  
ksi#H812EX90 for extruded blade



## STYLE #827

for flat or extruded blades, 3-1/2" blade holder for 4" wood post



## STYLE #850

2"X2" Square cap for flat or extruded blades

**SHORT** - 3-1/4" blade holder  
**LONG** - 5-1/4" blade holder



**Square Cap**

## STYLE #909

for flat or extruded blades, 6" blade holder and tapped on 4-11/16" centers, Bolt thru application only



**Round Cap**

- U-Channel cap and 90 degree crosspiece also available